

SACRED HEARTS ACADEMY



programs

SESSION I ► JUNE 13 TO 30

SESSION II ► JULY 3 TO 21

► FOR BOYS AND GIRLS

► FOR AGES THREE TO FIVE



CONTENTS

GENERAL SUMMER OVERVIEW	3
<hr/>	
REGISTRATION AND TUITION	4
General Registration Information	
Key Registration Dates	
How to Register	
Tuition + Fees + Meals	5
Registration Requirements	
Summer Meals	
<hr/>	
SNACKS AND LUNCH, ABSENCE AND TARDIES	6
<hr/>	
INTERNATIONAL STUDENTS HEALTH REQUIREMENTS	7
<hr/>	
CONDUCT AND ATTIRE STANDARDS	8
<hr/>	
COMMUNICATION AND GRADING	9
<hr/>	
ABOUT THE PROGRAM-SPECIFICS	10
Session Times	
Tuition and Fees	
Drop-Off and Pick-Up	11
<hr/>	
COURSE PATH AND SESSION OFFERINGS AT-A-GLANCE	12
<hr/>	
COURSE OFFERINGS DESCRIPTIONS	13



DATES

SESSION I ▶ JUNE 13 TO 30

SESSION II ▶ JULY 3 TO 21



FIND US

3253 WAIALAE AVENUE
HONOLULU HAWAII



CONTACT

www.sacredhearts.org
808.734.5058
summerschool@sacredhearts.org

GRADES PRESCHOOL
AND KINDERGARTEN

Sandra Arnobit
▶ Early Learning Center Director

✉ summerschool@sacredhearts.org

☎ 808.734.5058, ext. 251

📍 Attendance: 808.734.5058, ext. 256



ABOUT THE EARLY LEARNING PROGRAM

SUMMER MEANS SUN AND HAVING FUN! THE YOUNGSTERS IN THE **ACADEMY'S EARLY LEARNING CENTER (ELC)** WILL DO JUST THAT AS THEY "SEIZE THE SUMMER" AND TRY SOMETHING NEW!

During this adventure rooted experience and immersive activities, they will make exciting discoveries by exploring. They will construct fabulous creations by doing. They will inspire and constructively collaborate by sharing.

Through hands-on, engaging activities, the **ELC** learners – **boys** and **girls ages three to five** – grow their knowledge and build key foundational skills in reading, mathematics, science and more. A myriad of summer treats and adventures are also on the fascinating agenda.



EARLY LEARNING CENTER

▶ SESSION I
JUNE 13 TO 30

▶ SESSION II
JULY 3 TO 21

SUMMER at the **ACADEMY** will be an experience the young learners will never forget!

Self-contained classes are maintained during the **ELC SUMMER PROGRAMS** for those in **Preschool** and **Kindergarten** with all ELC students, faculty and visitors abiding by the school's COVID-19 policies and procedures in effect.

The explorations ensue during the Half-Day Morning Session from 7:30 to 11:45 a.m. Those wanting to continue the exciting experience can opt for the Full-Day option until 5 p.m. as part of the **ACADEMY'S Extended Summer Program**.

REGISTRATION

GENERAL REGISTRATION INFORMATION

Registration for courses is on a first-come, first-served basis, and classes fill quickly.

Applications are processed once payment is made in full.

Once payment and completed registration information are received and processed, a confirmation email will be sent to contact individuals.

KEY REGISTRATION DATES

- MARCH 11 ▶ Current students may register online or complete an application and submit by mail to the appropriate office
- ▶ Registration open to the public
- APRIL 15 ▶ Withdrawals prior to date assessed a \$50 fee
- April 16 to MAY 31 ▶ Withdrawals assessed \$100 fee
- JUNE 1 to 12 ▶ Withdrawals assessed 50 percent of tuition paid
(no refunds given after June 13, 2022)
- JUNE 4 ▶ Class schedules mailed or emailed
(Academy reserves right to cancel classes due to enrollment)

HOW TO REGISTER (ONLINE) + FORMS AND MATERIALS

The **EARLY LEARNING CENTER SUMMER PROGRAMS GUIDE**, course descriptions and details are available at the **ACADEMY'S** website (www.sacredhearts.org).

Students should register for the grade entering in the fall.



**SUMMER PROGRAMS
DETAILS AND FORMS**

(www.sacredhearts.org)

TUITION + FEES + MEALS

TUITION AND FEES

Tuition and fees vary, based on the number and type of courses taken.

SUPPLEMENTAL ITEMS TO REGISTER AND ATTEND

In addition to general student and class information, supplemental items must be submitted to complete registration and for attendance, including:

- ▶ **TB AND PHYSICAL EXAM RECORD**
(International students only; refer to page 9)

SUMMER CAFETERIA OPERATIONS HOURS AND PRICING

BREAKFAST ▶ 7:15 to 8 a.m.

MORNING SNACK ▶ 9:45 to 10 a.m.

HOT LUNCH*/ AFTERNOON SNACK ▶ 11:45 a.m. to 1 p.m.

**Available only to those purchasing meal plan and must be pre-ordered for the entire summer*

Prices vary by item. Breakfast and snacks may be purchased only with Mealtime accounts. These can be purchased after registration is complete and students receive identification credentials.

Students attending the **ACADEMY EARLY LEARNING CENTER (ELC)** can purchase a six-week meal plan to pay for hot lunches only. Offerings meet USDA nutrition guidelines and must be purchased before the beginning of the **SUMMER PROGRAMS** session.

(Refer to page 5 for more information about snacks and lunch)

▶ SUBMISSION OF SUPPLEMENTAL ITEMS

*Submit to Health Room at:



EMAIL

healthroom@
faculty.sacredhearts.org



MAIL

SACRED HEARTS ACADEMY
SUMMER PROGRAMS
ATTN: HEALTH ROOM
3253 Waiālae Avenue
Honolulu, HI. 96816

SNACKS AND LUNCH, ABSENCE AND TARDIES

SNACKS AND LUNCH

Students may bring lunch and snacks from home, or these may be ordered from Sodexo, the school's food service provider. Individually pre-packaged lunch or snacks orders will be delivered to the student's classroom.

Students are encouraged to bring their own water bottles and must never share drinks, utensils or food. Refills for water bottles will be done by their teachers and staff as needed

TARDIES AND ABSENCE REPORTING

Parents should report a student's absence by 8:15 a.m. by calling the Lower School Office at 808.734.5058, ext. 256.



ABSENCE REPORTING

(by 8:15 a.m.)

GRADES PRESCHOOL AND
KINDERGARTEN

▶ 808.734.5058, ext. 256

INTERNATIONAL STUDENT HEALTH REQUIREMENTS

ADDITIONAL HEALTH REQUIREMENTS FOR INTERNATIONAL STUDENTS

Students currently enrolled and attending school in **Preschool** and **Kindergarten** in Hawai'i and the continental United States do not need to submit health examination requirements to attend **SUMMER PROGRAMS** at the **ACADEMY**.

However, International students currently attending school in a foreign country outside of the United States are required – before attending the **ACADEMY'S SUMMER PROGRAMS** – to submit documents detailing a complete physical and a current TB test result from an evaluation conducted in this country and immunization records (report from country of origin for immunization details only acceptable).

These documents must be in English or have an English translation.

TB test results, a health physical report and immunization records for international students should be mailed to:

SACRED HEARTS ACADEMY SUMMER PROGRAMS
ATTENTION: HEALTH ROOM COORDINATOR
3253 Waialae Avenue
Honolulu, HI 96816



INTERNATIONAL STUDENTS

not currently attending school in Hawai'i or the United States—must submit documents detailing a complete physical and current TB test result and immunization records.

For more information about requirements, contact:

ADMISSION OFFICE
▶ 808.734.5058, ext. 2224

CONDUCT AND ATTIRE STANDARDS

CONDUCT STANDARDS

Students at the Academy are expected to uphold the following standards:

- ▶ Be respectful and kind in their relations with others at all times and be respectful of authority.
- ▶ Complete all required class work and assignments promptly.
- ▶ Take care of school property and the property of other students and teachers.
- ▶ Refrain from the use of abusive and offensive language, verbally as well as online.
- ▶ Turn off and put away cell phones during class time, unless specified by the instructor as needed for classroom projects.
- ▶ Dress modestly and neatly at all times (*Refer to Attire and Dress Standards below*).
- ▶ Be truthful and honest at all times.
- ▶ Abide by the "Internet Usage Statement" (*detailed on the registration form*).
- ▶ Keep classrooms and campus areas clean.

ATTIRE AND DRESS STANDARDS

Uniforms are not worn during the **ACADEMY'S SUMMER PROGRAMS**. Students not adhering to the dress code for the **EARLY LEARNING CENTER (ELC)** or their appropriate grade-level will be sent home and required to change. Swimwear tank tops and bare midriffs are not acceptable at any time.

Boys and girls in the ELC should dress in neat and appropriate, attire and wear shoes with socks or sandals with backstraps. In addition to the items above, short shorts are also not acceptable.



COMMUNICATION AND GRADING

PARENT-TEACHER COMMUNICATION

Effective communication between parents and teachers plays an important role in helping each student receive maximum benefits from the **ACADEMY'S SUMMER PROGRAMS** experience.

Parents are encouraged to read all newsletters, notes, emails and messages from **EARLY LEARNING CENTER (ELC)** teachers or the director and respond immediately if a response is required.

Parents who wish to speak to an **ELC** teacher should email them directly or call the LOWER SCHOOL OFFICE at 808.734.5058, ext. 256.



CONTACT ELC DIRECTOR OR A TEACHER

▶ 808.734.5058, ext. 256

ABSENCE REPORTING

Parents should report a student's absence by 8:15 a.m. by calling the Lower School Office at 808.734.5058, ext. 256.



ABSENCE REPORTING

(by 8:15 a.m.)

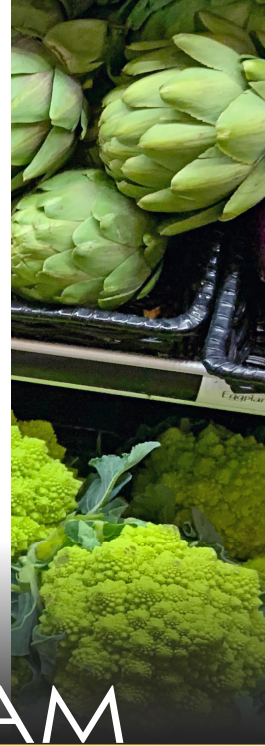
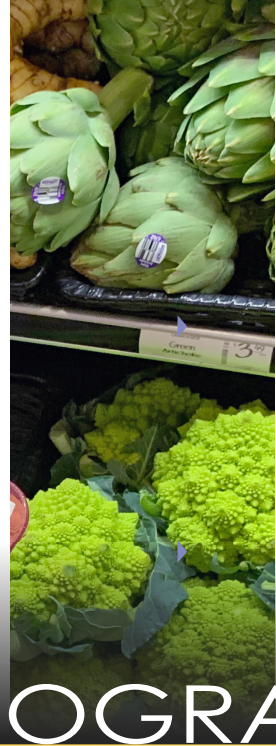
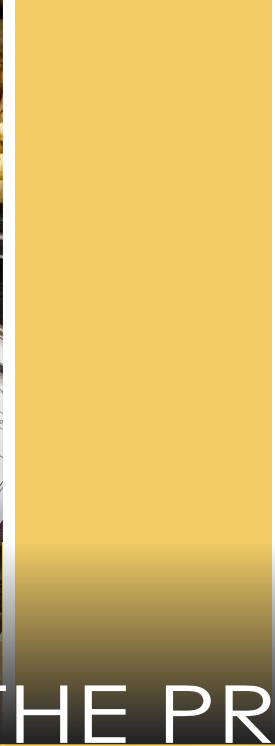
▶ 808.734.5058, ext. 256

GRADING AND REPORT CARDS

A report card will be mailed at the conclusion of the **ACADEMY'S SUMMER PROGRAMS Session** for all students enrolled, including those in the **ELC**, with grading and evaluation marks based on grade-level and course requirements.

ELC students will receive 4 (*Meeting Expectations with Excellence*), 3 (*Meeting Expectations*), 2 (*Approaching Expectations*) or 1 (*Emerging*) ratings in their courses.

The LOWER SCHOOL OFFICE will forward a copy of the final transcript report to the student's school upon a parent's written request. For **ACADEMY'S** students, a copy of the **SUMMER PROGRAMS** report automatically becomes part of the student's record.



ABOUT THE PROGRAM

Boys and girls ages three to five who are immersed in the **ACADEMY EARLY LEARNING CENTER'S (ELC)** dynamic **SUMMER PROGRAM** will embark on a memorable adventure.

During their explorations, the young students will *discover by exploring, create by doing and inspire by sharing!* They will ponder and tinker and take on novel things. Reading, writing, mathematics, science, engineering, the Performing and Visual Arts and more are all on the agenda – along with tons of fun.

Refer to the *Course Summary* listing and detailed description section for information on specific curriculum, class eligibility, course fees and date and times options.

SESSION DATES

SESSION I ► JUNE 13 TO 30

SESSION II ► JULY 5 TO 21

SESSION TIMES

- MORNING SESSION PROGRAM (Half-Day)
7:30 to 11:45 a.m.*
- EXTENDED SUMMER PROGRAM (Full Day)
7:30 a.m. to 5 p.m.

(continued)



TUITION
AND FEES

- MORNING PROGRAM (Half-Day)
 - Session I \$450
 - Session \$450
 - Session I and 2 \$900
- MORNING AND EXTENDED SUMMER PROGRAM (Half- and Full Day)
 - Session I \$900
 - Session 2 \$900
 - Session I and 2 \$1800



ACADEMY EARLY LEARNERS

- DISCOVER BY EXPLORING.
- CREATE BY DOING.
- INSPIRE BY SHARING.

ABOUT THE PROGRAM

MORNING SESSION DROP-OFF*

Preschool and Senior Kindergarten students attending **SUMMER PROGRAMS** at the **ACADEMY'S EARLY LEARNING CENTER (ELC)** should be checked-in and dropped-off at the ELC facility starting at 7:30 a.m.

Authorized adults completing check-in procedures can park in stalls designated as "Reserved for the Early Learning Center" in the parking lot fronting Waialae Avenue.

MORNING SESSION PICK-UP*

ELC Preschool and Senior Kindergarten students should be checked-out and picked-up at the Autoline along 5th Avenue - enter from Waialae Avenue - beginning at 11:45 a.m.

EXTENDED SUMMER PROGRAM PICK-UP*

Those students enrolled in the **EXTENDED SUMMER PROGRAM Preschool** and **Senior Kindergarten** should be checked-out and picked-up at the ELC facility until 5 p.m.

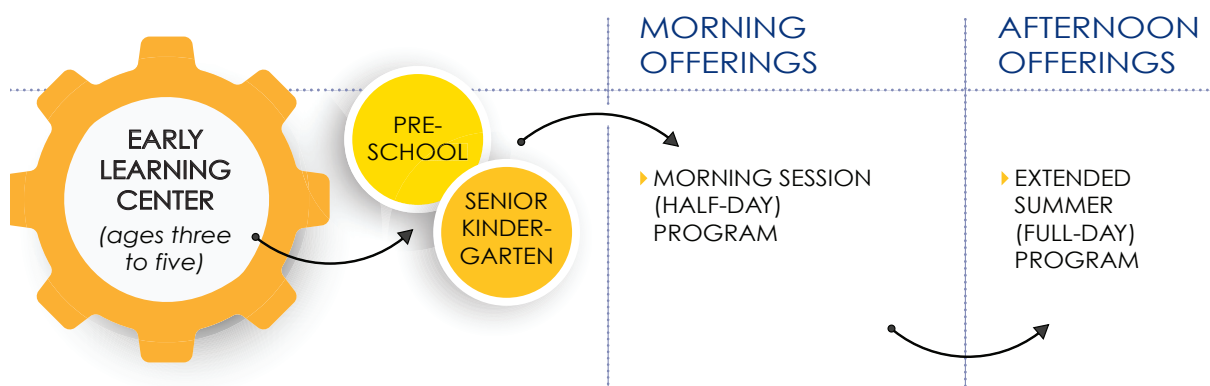


*CHECK-IN AND SIGN-OUT PROTOCOLS FOR EARLY LEARNING CENTER

- ▶ ELC students can only be dropped-off and picked-up by designated authorized adults.
- ▶ These adults must complete proper ELC protocols for student check-in and sign-out.
- ▶ When completing the ELC drop-off and pick-up process, these authorized adults can park in stalls designated as "Reserved for the Early Learning Center" in the parking lot fronting Waialae Avenue.

COURSE PATH AND SESSION OFFERINGS

CHOOSING COURSE PATH



EARLY LEARNING CENTER OFFERINGS – MORNING AND EXTENDED SUMMER PROGRAM

COURSE NAME	PRESCHOOL	KINDERGARTEN
(Half-Day) Session I	x	x
Half-Day) Session II	x	x
(Half-Day) Session I and II	x	x
Extended Summer (Full-Day) Session I	x	x
Extended Summer (Full-Day) Session II	x	x
Extended Summer (Full-Day) Session I and II	x	x



OFFERING DESCRIPTIONS

GRADE MORNING AND FULL-DAY SESSIONS (ALPHABETICAL)

► PRESCHOOL MORNING (HALF-DAY) / MORNING ► EXTENDED SUMMER (FULL-DAY)

Summer means sun and fun! Young learners will celebrate the sun-filled days with exciting discoveries and explorations about **"Mr. Sun,"** its properties, what it provides to the Earth and its inhabitants and how it affects all daily life.

The **PRESCHOOLERS** will be fascinated and "have a blast" making summer treats, gaining knowledge about sun safety and even discovering summer fashion styles and the latest trends.

This engaging course incorporates a wide array of hands-on activities that will surely give young learners an experience they will never forget! All **PRESCHOOLERS** should not miss out and join in for **"Fun in the Sun!"**

Each day, parents should pack a healthy snack and a water bottle, labeled with the child's name, for their daughter to bring to school.

HALF-DAY – SESSION I	JUNE 13 TO 30	7:30 A.M. to 11:45 A.M.	Course Fee: \$450
HALF-DAY – SESSION II	JULY 3 TO 21	7:30 A.M. to 11:45 A.M.	Course Fee: \$450
HALF-DAY – SESSION I + – SESSION II	JUNE 13 TO 30 + JULY 3 TO 21	7:30 A.M. to 11:45 A.M.	Course Fee: \$900
FULL-DAY – SESSION I	JUNE 13 TO 30	7:30 A.M. to 5:00 P.M.	Course Fee: \$900
FULL-DAY – SESSION II	JULY 3 TO 21	7:30 A.M. to 5:00 P.M.	Course Fee: \$900
FULL-DAY – SESSION I + – SESSION II	JUNE 13 TO 30 + JULY 3 TO 21	7:30 A.M. to 5:00 P.M..	Course Fee: \$1800

KINDERGARTEN

KINDERGARTEN MORNING (HALF-DAY) / MORNING ► EXTENDED SUMMER (FULL-DAY)

Utilizing an integrated, engaging and literature-rich curriculum related to healthy living, this course is focused on preparing students of Kindergarten!

During **SUMMER SESSION I**, the focus will follow the theme, “*Oh the Wonders of Water.*” The **KINDERGARTEN** students will explore the properties of water – where it comes from, how it is utilized and how it can be conserved. They young discoverers will conduct extensive experiments to discover fascinating facts about this important resource. Opportunities to get wet and have buckets of fun will be included.

During **SESSION II**, young investigators will keep alert for a “*human bubble*” or “*bubble snake*” during this study which will be a “*bubbly*” good time! Among the questions **KINDERGARTNERS** will seek to answer run the gamut from “What is a bubble?,” “What is it made of?,” “Are all bubbles the same?,” and more. They will experiment and make their very own bubble solutions, paint with bubbles, create bubble words, make a bubble snake and even attempt to be a “human” bubble. Inquisitive learners are invited to become a “bubble scientist” and reach new heights.

In both sessions, students will build reading readiness skills through exciting read-aloud and hands-on centers to practice their key foundational reading skills.

In Mathematics, these young students will spend the summer building “number sense” using manipulatives, mathematics games and technology.

Students will also engage in science, Physical Education and art activities related to healthy habits, including staying active, eating a balanced diet and proper hygiene. Character education and social skills will also be developed through carefully-selected literature and collaborative activities.

Each day, parents should pack a healthy snack and a water bottle, labeled with the child's name, for their daughter to bring to school.

HALF-DAY – SESSION I	JUNE 13 TO 30	7:30 A.M. to 11:45 A.M.	Course Fee: \$450
HALF-DAY – SESSION II	JULY 3 TO 21	7:30 A.M. to 11:45 A.M.	Course Fee: \$450
HALF-DAY – SESSION I + – SESSION II	JUNE 13 TO 30 + JULY 3 TO 21	7:30 A.M. to 11:45 A.M.	Course Fee: \$900
FULL-DAY – SESSION I	JUNE 13 TO 30	7:30 A.M. to 5:00 P.M.	Course Fee: \$900
FULL-DAY – SESSION II	JUNE 3 TO 21	7:30 A.M. to 5:00 P.M.	Course Fee: \$900
FULL-DAY – SESSION I + – SESSION II	JUNE 13 TO 30 + JULY 3 TO 21	7:30 A.M. to 5:00 P.M..	Course Fee: \$1800